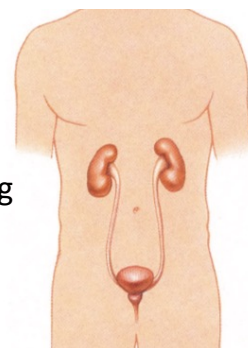


# Laparoscopic/ Robotic Radical & Partial Nephrectomy

## Patient Guide

### Procedure

- A **radical nephrectomy** is the removal of an entire kidney and surrounding fatty tissue.
- A **partial nephrectomy** is the removal of part of the kidney. Depending on the size and location of your tumor, you may be a candidate for a partial nephrectomy.

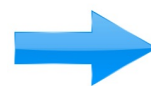


### Prior to Surgery

- At your clinic visit, your surgeon will review with you (1) your anatomy, (2) tumor location, and (3) risks and benefits of the procedure. In the event of a partial nephrectomy, there is a small risk of loss of entire kidney (<10% risk).
- If you take any blood thinners (ie: Xarelto, Eliquis, Aspirin), please discuss with your surgeon prior.
- You may be requested to obtain medical clearance by your primary physician prior.
- The hospital will call you 1-2 days prior to surgery to confirm arrival time and location.
- No eating or drinking after midnight prior to your procedure unless otherwise instructed.
- Your surgeon will meet you in the pre-operative area before surgery and review consent.

### During Surgery

- Your procedure requires approximately 2-4 hours of general anesthesia.
- Your incisions will be closed with sutures and skin glue, both will dissolve within weeks.
- You will come out of surgery with a foley catheter to drain your bladder that will most likely be removed the morning after surgery.

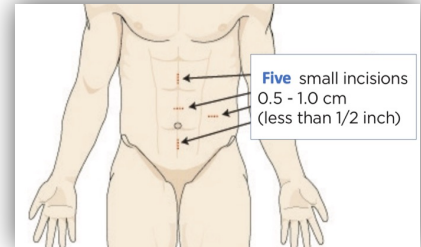


# Laparoscopic/ Robotic Radical & Partial Nephrectomy (2)

## Patient Guide

### Laparoscopic Approach

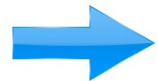
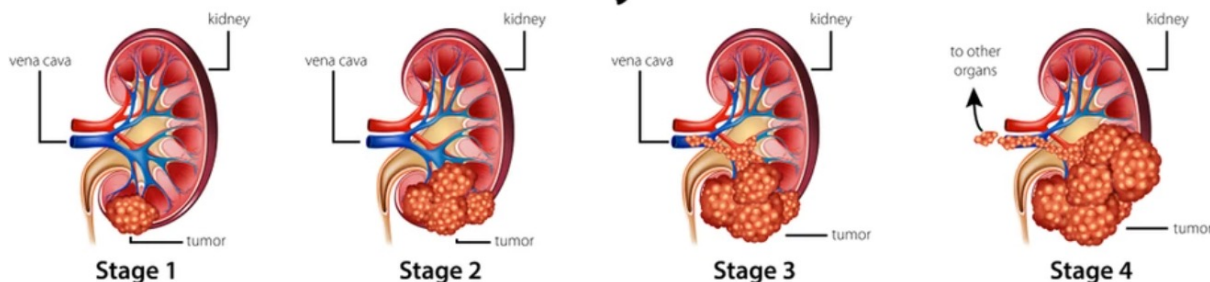
- At least 5 small incisions are used to perform your surgery using small surgical instruments or the robot.
- The surgeon controls the instruments at all times.
- You will have one larger incision to remove the kidney or tumor.



### After Surgery (While in hospital)

- You will stay with us in the hospital on average 1-2 nights.
- You may have sips of clear liquids the night of your surgery.
- You will be given IV and oral pain medications to alleviate your pain.
- It is important to use the breathing machine given to you after surgery 10x/hour.
- We will motivate you to start walking day after surgery to quicken your recovery.
- Your catheter will most likely be removed the morning after surgery.
- Although we hope you will pass flatus 1-2 days after surgery, it may take you longer to have a bowel movement. You will be given a bowel regimen perioperatively.

### Kidney Cancer



# Laparoscopic/ Robotic Radical & Partial Nephrectomy (3)

## Patient Guide

### Discharge Instructions

<b>Pain</b>	You may experience pain postoperatively. You will be prescribed a pain medication that can be alternated with Tylenol as needed.
<b>Activity</b>	You should walk and climb stairs. You may perform household duties. No heavy lifting (>10 lbs) or strenuous exercise for 6 weeks. No running for 2 weeks.
<b>Bathing</b>	You may shower day after surgery, but no bathtubs, jacuzzis, or swimming pools for 2 weeks. Do not scrub around the incisions.
<b>Diet</b>	You may have a decreased appetite after surgery. You may gradually resume your normal diet once you have started passing gas or had a bowel movement. Please take docusate or miralax for 2 weeks.
<b>Driving</b>	May resume driving one week after surgery if not taking any pain medications.
<b>School/Work</b>	You may return to work/school 2 weeks after surgery.
<b>Intercourse</b>	Please refrain from intercourse for two weeks after surgery.
<b>Expectations</b>	You may experience mild blood in urine, constipation, bloating, bladder spasms, bruising, among others. These should resolve within one week after surgery. If you experience scrotal swelling, wear tight fitting underwear.
<b>When to call</b>	<p>Please call your surgeon (or in severe cases, present to the ER) if any of the following occur:</p> <ul style="list-style-type: none"><li>❖ you have a fever &gt;101 F</li><li>❖ you cannot have a bowel movement within 3-5 days</li><li>❖ you are vomiting</li><li>❖ you have leg swelling</li><li>❖ you experience shortness of breath or chest tightness</li><li>❖ your pain is not controlled with medication</li></ul> <p>If you underwent a <b>partial nephrectomy</b> and develop worsening blood in the urine &gt;1 week after surgery, please present to the <b>Emergency Room</b>.</p>
<b>Follow-up</b>	We will see you in clinic in 2-3 weeks and will review pathology at that time. Please call our office if you do not have an appointment already.